

Printer Settings

Zebra ZXP (half panel)



Close

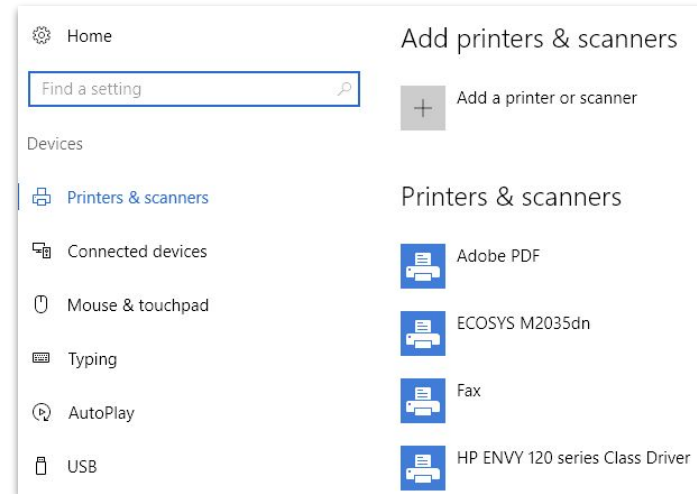
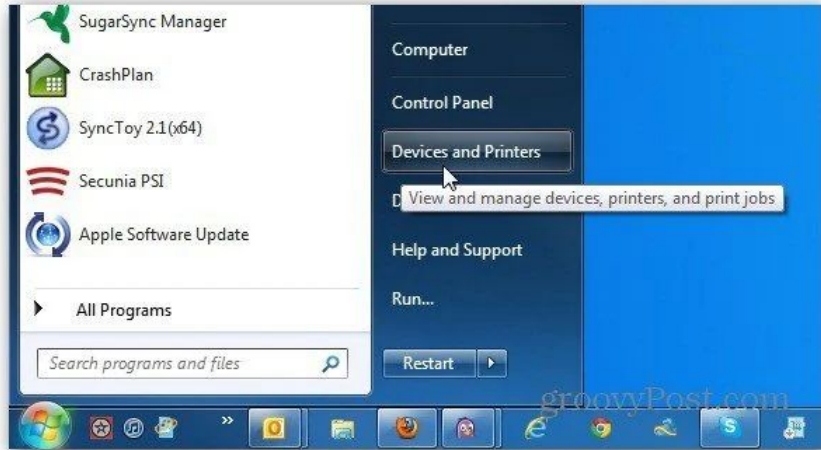
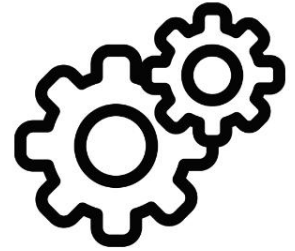
Smart Identity Pro

and

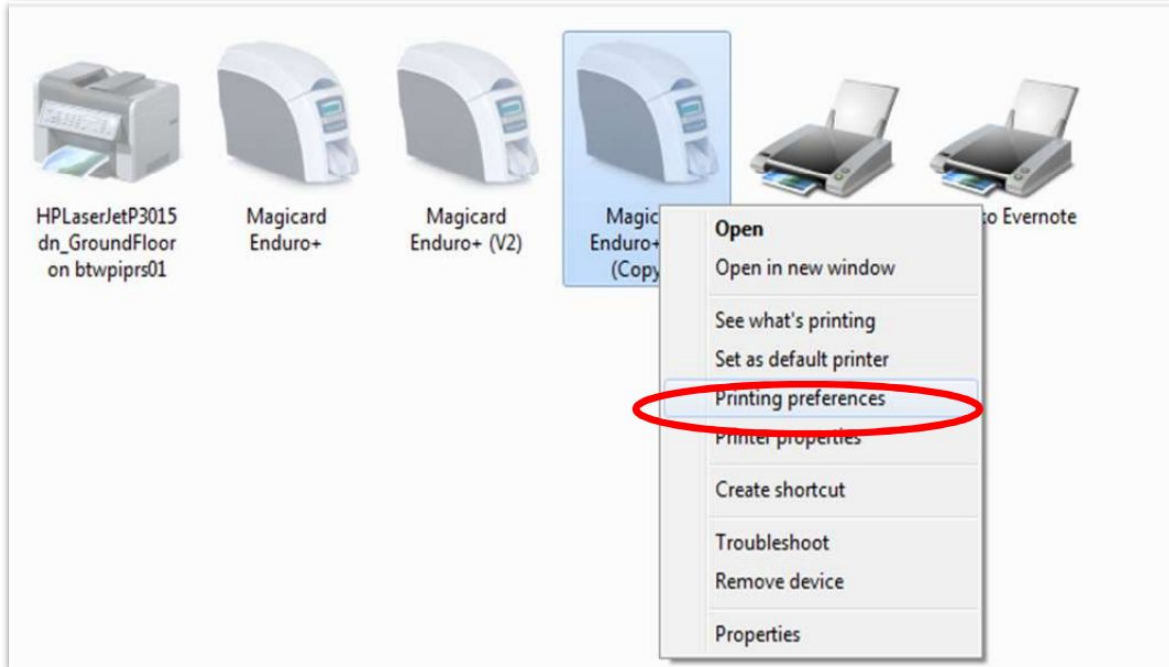
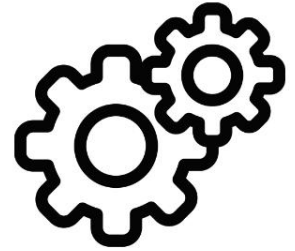
Adobe Reader

before applying printer settings

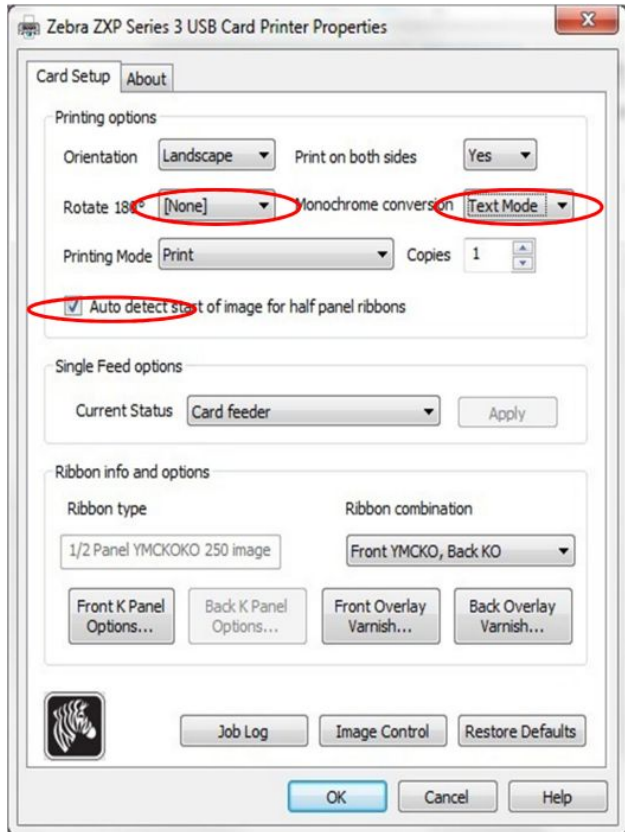
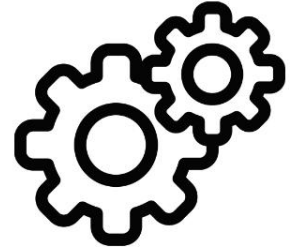
Open *Devices and Printers* or *Printer and Scanners* based on your Windows version



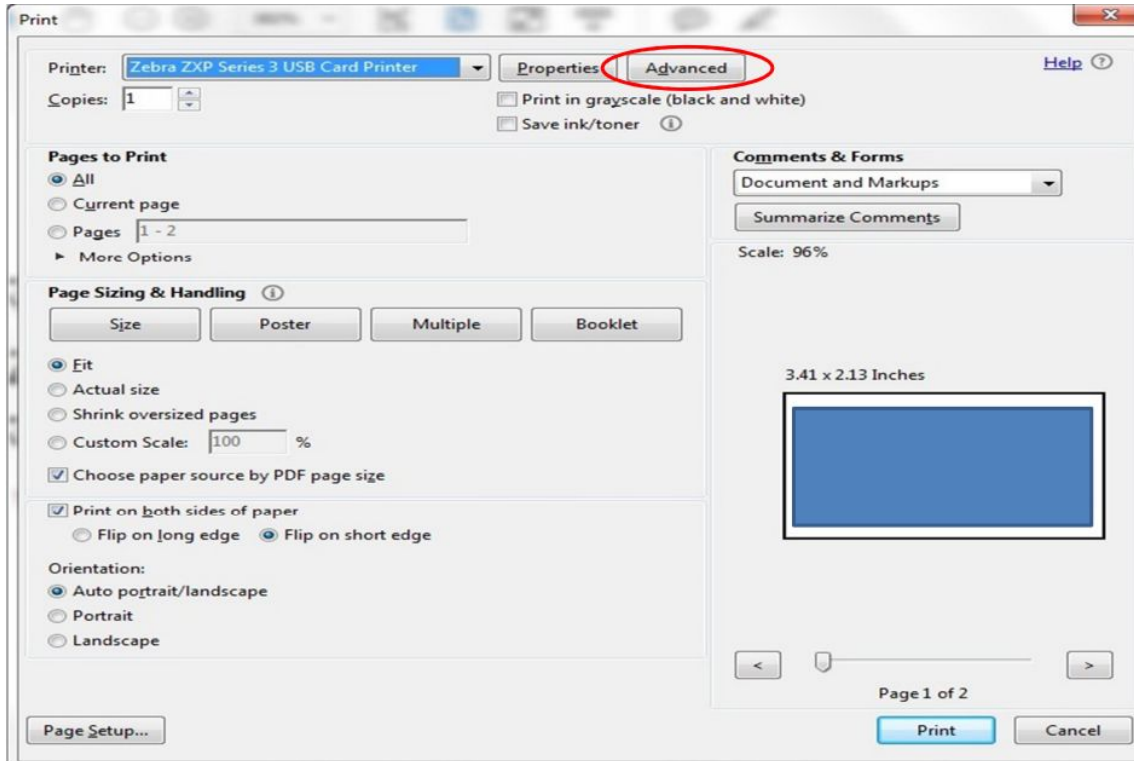
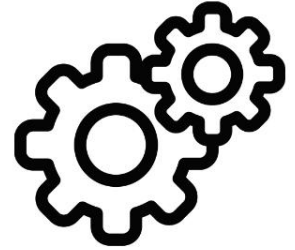
Right click on printer icon to select *Printing Preferences*



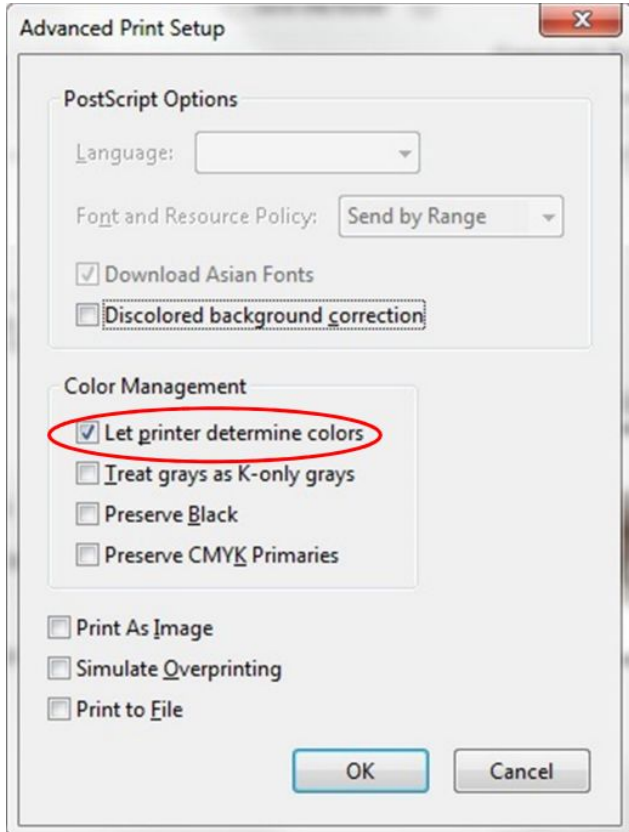
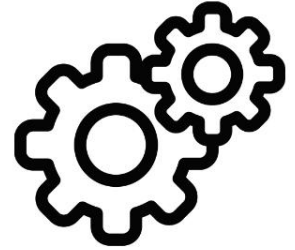
Printer Preferences *(match as shown)*



Open *Smart Identity Pro* -> *Print* -> *Advanced*



Select *Let printer determine colors*





Open any file and ***Print***

Happy Printing!